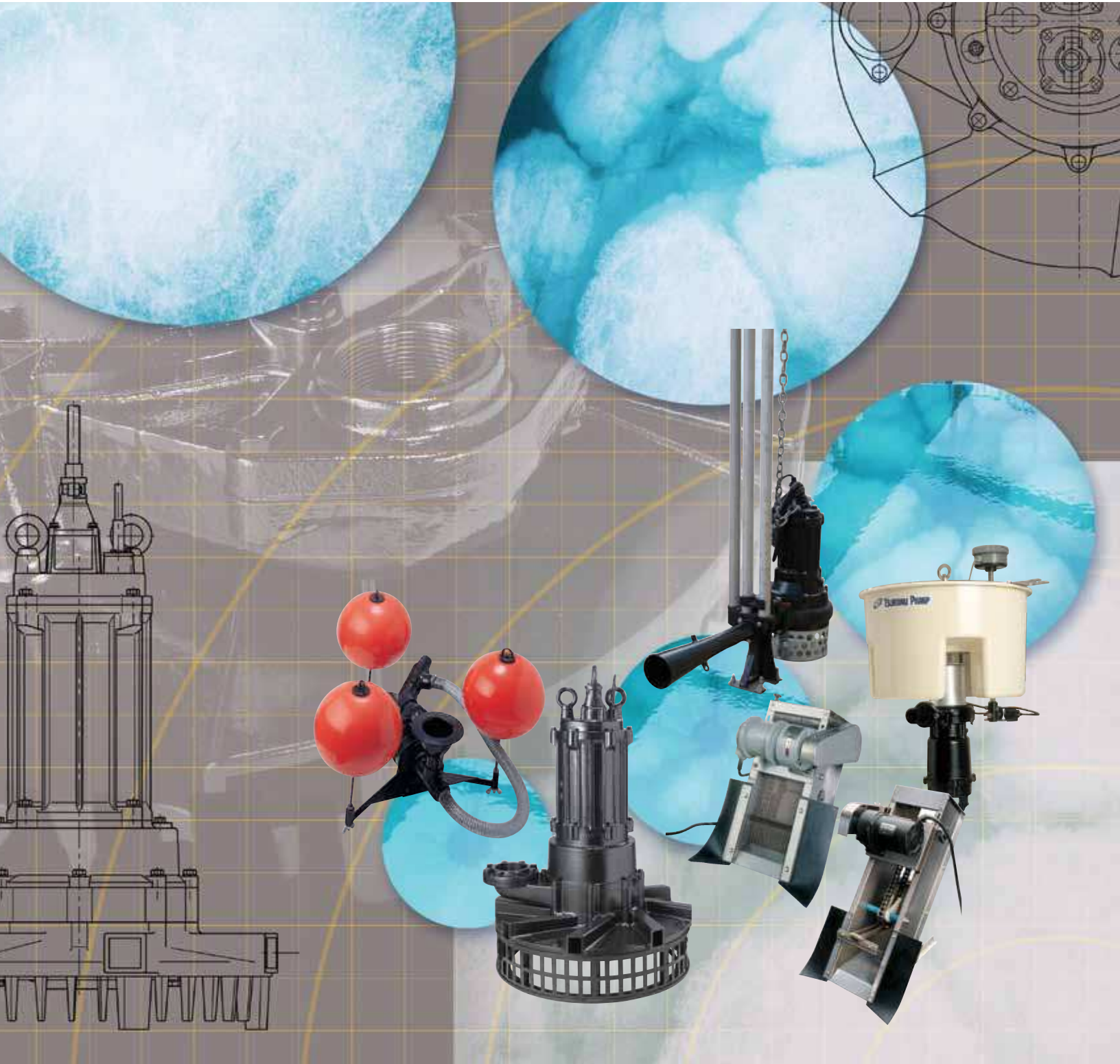




PROCESS EQUIPMENT

improve wastewater treatment efficiencies



Submersible Ejector, Aerator / Mixer

BER



The BER is designed for both very high oxygen transfer and excellent mixing. The BER is used in Sequence Batch Reactors (SBR) where high oxygen transfer is required during the aeration cycle and excellent mixing only during the anodic cycle.

- APPLICATION**
- Ideal for SBR treatment systems.
 - Superior oxygen transfer rate during aeration cycle.
 - Excellent mixing during the anodic cycle
 - Aspirating aerator eliminating the need for blowers and air piping
 - Self aspiration of oxygen eliminates need for compressed air.

BER Series: Wastewater Aerator / Mixer (Free Standing)

Model	Air Inlet Dia. (in.)	Output HP	Voltage	Phase	Cable Length (ft.)	Weight (lbs.)
8-BERS	1	1	115 or 230	1	32	117
8-BER	1	1	208-230 or 460	3	32	115
15-BER	1.5	2	208-230 or 460	3	32	97
22-BER	2	3	208-230 or 460	3	32	155
37-BER	2	5	208-230 or 460	3	32	196/209
55-BER	2	7.5	208-230 or 460	3	32	231/244

BER Series: Wastewater Aerator / Mixer (With Slide Rail System)

Model	Air Inlet Dia. (in.)	Output HP	Voltage	Phase	Cable Length (ft.)	Weight (lbs.)
TOS-8-BERS	1	1	115 or 230	1	32	75
TOS-8-BER	1	1	208-230 or 460	3	32	73
TOS-15-BER	1.5	2	208-230 or 460	3	32	123
TOS-22-BER	2	3	208-230 or 460	3	32	212
TOS-37-BER	2	5	208-230 or 460	3	32	247
TOS-55-BER	2	7.5	208-230 or 460	3	32	353

Submersible Aerator / Mixer

TRN



Submersible aspirating aerators ranging in size from 1HP to 55HP. The TRN provides very high oxygen transfer efficiency and mixing.

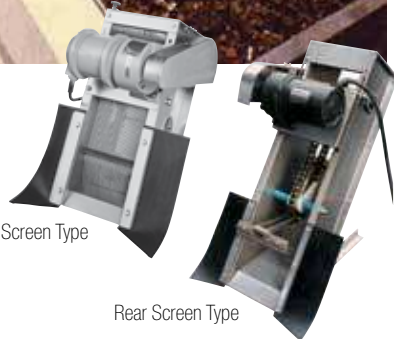
- APPLICATION**
- Aeration Tanks, Post Aeration Tanks, Lagoon aeration, Deep tank aeration with a blower.
 - Impeller is made with a Special Semi-Open 410 Stainless Steel.
 - Horsepower ranges from 1 hp to 55 hp.
 - Will operate in water depth of 32 feet with a supplemental blower excellent oxygen transfer and mixing.

TRN Series: Sewage & Wastewater Aerator / Mixer (Free Standing)

Model	Air Inlet Dia. (in.)	Output HP	Voltage	Phase	Cable Length (ft.)	Weight (lbs.)
32TRN2.75S	1.25	1	115 or 230	1	32	132
32TRN2.75	1.25	1	208-230 or 460	3	32	132
32TRN21.5	1.25	2	208-230 or 460	3	32	154
50TRN42.2	2	3	208-230 or 460	3	32	374
50TRN43.7	2	5	208-230 or 460	3	32	396
50TRN45.5	2	7.5	208-230 or 460	3	32	484
80TRN47.5	3	10	208-230 or 460	3	32	528
80TRN412	3	16	208-230 or 460	3	32	616
80TRN417	3	23	460	3	32	485
100TRN424	4	32	460	3	32	1014
150TRN440	6	55	460	3	32	1400

Bar Screen

KS / KE / KM, KMA



Mechanically cleaned bar screens; designed for the small plant inflows to remove solids from the wastewater resulting in the eliminating solids from aeration tanks & clarifiers. Screen have capacity range from 1 GPM to 690 GPM. Bar spacing range from 1mm to 50mm. The screens are fabricate of 304 stainless steel for corrosion resistance.

The **KE/KS SERIES** are front-type mechanical bar screens in which major parts are made of 304 stainless steel. The saw teeth on each rake travel between screen bars, which prevents foreign matters from lodging in the screen bars. The KS-series has an eccentric roller mechanism that pulls the rake out of the screen bars at the solids releasing point and eliminates the jamming of solids.

APPLICATION

- Primary wastewater treatment.
- Lift stations, screening solids from kitchen effluent at hotels, factory, hospital and prisons.

The **KM/KMA SERIES** are reacher arm rake mechanical bar screens. The reacher arm mechanical bar screen eliminates the chain coming in contact with the liquid.

APPLICATION

- Primary wastewater treatment.
- Lift stations, screening solids from kitchen effluent at hotels, factory, hospital and prisons.

KS Series: Fine Screen - Front Screen Type

Model	Bar Spacing (mm)	Motor HP(kW)	Voltage	Phase	Screen Type	Weight (lbs.)
KS-200Z	1.0	1/8 (0.1)	220 or 440	3	Fine	71
KS-200Z	2.0 - 2.5	1/8 (0.1)	220 or 440	3	Fine	71
KS-200Z	5.0	1/8 (0.1)	220 or 440	3	Fine	71
KS-200Y	1.0	1/8 (0.1)	220 or 440	3	Fine	110
KS-200Y	2.0 - 2.5	1/8 (0.1)	220 or 440	3	Fine	110
KS-200Y	5.0	1/8 (0.1)	220 or 440	3	Fine	110
KS-300Y	1.0	1/8 (0.1)	220 or 440	3	Fine	120
KS-300Y	2.0 - 2.5	1/8 (0.1)	220 or 440	3	Fine	120
KS-300Y	5.0	1/8 (0.1)	220 or 440	3	Fine	120
KS-200S	1.0	1/8 (0.1)	220 or 440	3	Fine	105
KS-200S	2.0 - 2.5	1/8 (0.1)	220 or 440	3	Fine	105
KS-200S	5.0	1/8 (0.1)	220 or 440	3	Fine	105
KS-200M	1.0	1/8 (0.1)	220 or 440	3	Fine	115
KS-200M	2.0 - 2.5	1/8 (0.1)	220 or 440	3	Fine	115
KS-200M	5.0	1/8 (0.1)	220 or 440	3	Fine	115
KS-200L	1.0	1/8 (0.1)	220 or 440	3	Fine	138
KS-200L	2.0 - 2.5	1/8 (0.1)	220 or 440	3	Fine	138
KS-200L	5.0	1/8 (0.1)	220 or 440	3	Fine	138

KS Series: Coarse Screen - Front Screen Type

Model	Bar Spacing (mm)	Motor HP(kW)	Voltage	Phase	Screen Type	Weight (lbs.)
KS-200S	20-30-40-50	1/8 (0.1)	220 or 440	3	Coarse	110
KS-200M	20-30-40-50	1/8 (0.1)	220 or 440	3	Coarse	120
KS-200L	20-30-40-50	1/8 (0.1)	220 or 440	3	Coarse	138

KE Series: Fine Screen - Front Screen Type

Model	Bar Spacing (mm)	Motor HP(kW)	Voltage	Phase	Screen Type	Weight (lbs.)
KE-200S	2.0 - 2.5	1/8 (0.1)	220 or 440	3	Fine	70
KE-200S	5.0	1/8 (0.1)	220 or 440	3	Fine	70
KE-200M	2.0 - 2.5	1/8 (0.1)	220 or 440	3	Fine	84
KE-200M	5.0	1/8 (0.1)	220 or 440	3	Fine	84
KE-200L	2.0 - 2.5	1/8 (0.1)	220 or 440	3	Fine	93
KE-200L	5.0	1/8 (0.1)	220 or 440	3	Fine	93

KM Series: Fine Screen - Rear Screen Type

Model	Bar Spacing (mm)	Motor HP(kW)	Voltage	Phase	Screen Type	Weight (lbs.)
KM-200S	2 - 2.5 - 5.0	1/8 (0.1)	220 or 440	3	Fine	73
KM-200M	2 - 2.5 - 5.0	1/8 (0.1)	220 or 440	3	Fine	82
KM-200L	2 - 2.5 - 5.0	1/8 (0.1)	220 or 440	3	Fine	88
KM-250S	2 - 2.5 - 5.0	1/8 (0.1)	220 or 440	3	Fine	75
KM-250M	2 - 2.5 - 5.0	1/8 (0.1)	220 or 440	3	Fine	84
KM-250L	2 - 2.5 - 5.0	1/8 (0.1)	220 or 440	3	Fine	90
KM-300S	2 - 2.5 - 5.0	1/8 (0.1)	220 or 440	3	Fine	77
KM-300M	2 - 2.5 - 5.0	1/8 (0.1)	220 or 440	3	Fine	86
KM-300L	2 - 2.5 - 5.0	1/8 (0.1)	220 or 440	3	Fine	93
KMS-300S	5.0	1/8 (0.1)	220 or 440	3	Fine	93
KMS-300M	5.0	1/8 (0.1)	220 or 440	3	Fine	110
KMS-300L	5.0	1/8 (0.1)	220 or 440	3	Fine	126

KMA Series: Coarse Screen - Front Screen Type

Model	Bar Spacing (mm)	Motor HP(kW)	Voltage	Phase	Screen Type	Weight (lbs.)
KMA-200S	20-30-40-50	1/8 (0.1)	220 or 440	3	Coarse	73
KMA-200M	20-30-40-50	1/8 (0.1)	220 or 440	3	Coarse	82
KMA-200L	20-30-40-50	1/8 (0.1)	220 or 440	3	Coarse	88

KMA Series: Coarse Screen - Rear Screen Type

Model	Bar Spacing (mm)	Motor HP(kW)	Voltage	Phase	Screen Type	Weight (lbs.)
KMA-250S	10-20-30-40-50	1/8 (0.1)	220 or 440	3	Coarse	75
KMA-250M	10-20-30-40-50	1/8 (0.1)	220 or 440	3	Coarse	84
KMA-250L	10-20-30-40-50	1/8 (0.1)	220 or 440	3	Coarse	90
KMA-300S	10-20-30-40-50	1/8 (0.1)	220 or 440	3	Coarse	77
KMA-300M	10-20-30-40-50	1/8 (0.1)	220 or 440	3	Coarse	86
KMA-300L	10-20-30-40-50	1/8 (0.1)	220 or 440	3	Coarse	93
KMS-300S	10-20-30-40-50	1/8 (0.1)	220 or 440	3	Coarse	93
KMS-300M	10-20-30-40-50	1/8 (0.1)	220 or 440	3	Coarse	110
KMS-300L	10-20-30-40-50	1/8 (0.1)	220 or 440	3	Coarse	126

Scum Skimmer FSP



The unique FSP scum skimmer removes floating oils and grease solids. The scum is pumped from the skimmer to the concentration tank for processing.

APPLICATION

- Can be adjusted from 0.39" — 2.36" below the water surface.
- Designed with a jet injector suction mechanism to collect scum efficiently.

FSP Series: Scum Skimmer

Model	Discharge Dia. (in.)	Output HP	Voltage	Phase	Cable Length (ft.)	Weight (lbs.)
4-FSPS	2	0.5	115 or 230	1	32	80
4-FSP	2	0.5	230 or 460	3	32	80
8-FSPS	2	1	115 or 230	1	32	87
8-FSP	2	1	230 or 460	3	32	87

Decanting Unit FHP



SBR and Digester decanting pump is equipped with a suspended solids sensor that allows the decanter pump to operate independently. When the suspended solids rise above the set value, the sensor will activate shutting down the decanter, ensuring that only supernatant water is discharged without any entrapment of sediment.

APPLICATION

- Unique floating ball valve seals out solids from the pump inlet.
- Compact design.
- Decants treated wastewater without using additional large scale batch facilities.

FHP Series: Decanting Unit

Model	Discharge Dia. (in.)	Output HP	Voltage	Phase	Cable Length (ft.)	Weight (lbs.)
FHP-3	1.5	0.34	115 or 230	1	32	58
FHP-3T	1.5	0.34	230 or 460	3	32	57
FHP-4	2	0.5	115 or 230	1	32	65
FHP-4T	2	0.5	230 or 460	3	32	61
FHP-8	2	1	115 or 230	1	32	61
FHP-8T	2	1	230 or 460	3	32	61
FHP-15T	2	2	230 or 460	3	32	132

FHP Series: Decanting Unit (With Slide Rail System)

Model	Discharge Dia. (in.)	Output HP	Voltage	Phase	Cable Length (ft.)	Weight (lbs.)
FHP-3K	1.5	0.34	115 or 230	1	32	58
FHP-3TK	1.5	0.34	230 or 460	3	32	57
FHP-4K	2	0.5	115 or 230	1	32	65
FHP-4TK	2	0.5	230 or 460	3	32	61
FHP-8TK	2	1	230 or 460	3	32	61
FHP-15TK	2	2	230 or 460	3	32	132

We reserve the right to change the specifications and designs for improvement without prior notice.



TSURUMI (AMERICA), INC. • 1625 FULLERTON COURT, GLENDALE HEIGHTS, IL 60139
 TOLL-FREE 1-888-878-7864 • FAX 1-630-793-0146 • info@tsurumiamerica.com
www.tsurumipump.com